



# Marie Skłodowska-Curie Actions Staff Exchanges Info Session

*SLIDO #SE21*

*#StaffExchangesDay*

*19 November 2021*

Meeting will start soon!



*Welcome to our*  
***Staff Exchanges Info Session***

*19 November 10:30*

**MSCA**

Marie Skłodowska-Curie Actions

*Developing talents,  
advancing research*



#StaffExchangesDay  
@REA\_research  
@MSCAactions

# Go to Slido #SE21

- [www.sli.do](http://www.sli.do)
- Polls
- Questions and Answers



#StaffExchangesDay  
@REA\_research  
@MSCActions



# Marie Skłodowska-Curie Actions Staff Exchanges Info Session

*SLIDO #SE21*

*#StaffExchangesDay*

*19 November 2021*

# Go to Slido #SE21

- [www.sli.do](http://www.sli.do)
- Polls
- Questions and Answers



#StaffExchangesDay  
@REA\_research  
@MSCActions

# Agenda



Introduction

Policy  
context

Apply for  
funding

Panel  
discussion



Go to Slido **#SE21**

# Today's speakers

- Begoña ARANO – Head of Department REA.A
- Marlène BARTES – Policy Officer DG EAC.C.2
- Vasiliki EXARCHOU – Project Officer REA.A.3
- Nancy DZOKOTO POMENYA – Project Officer REA.A.3



# Today's panellists



Maria Fatima LUCAS  
CEO - ZYMOVOL



Anne-Laure MENTION  
Director - Global Business  
Innovation Enabling  
Capability Platform at Royal  
Melbourne Institute of  
Technology



Alessio DI IORIO  
CEO - Alma Sistemi SRL





# Opening remarks

Begoña ARANO

Head of Department

European Research Executive Agency REA.A



# Slido 1<sup>st</sup> poll results

[www.sli.do](http://www.sli.do) #SE21





# MSCA Policy context

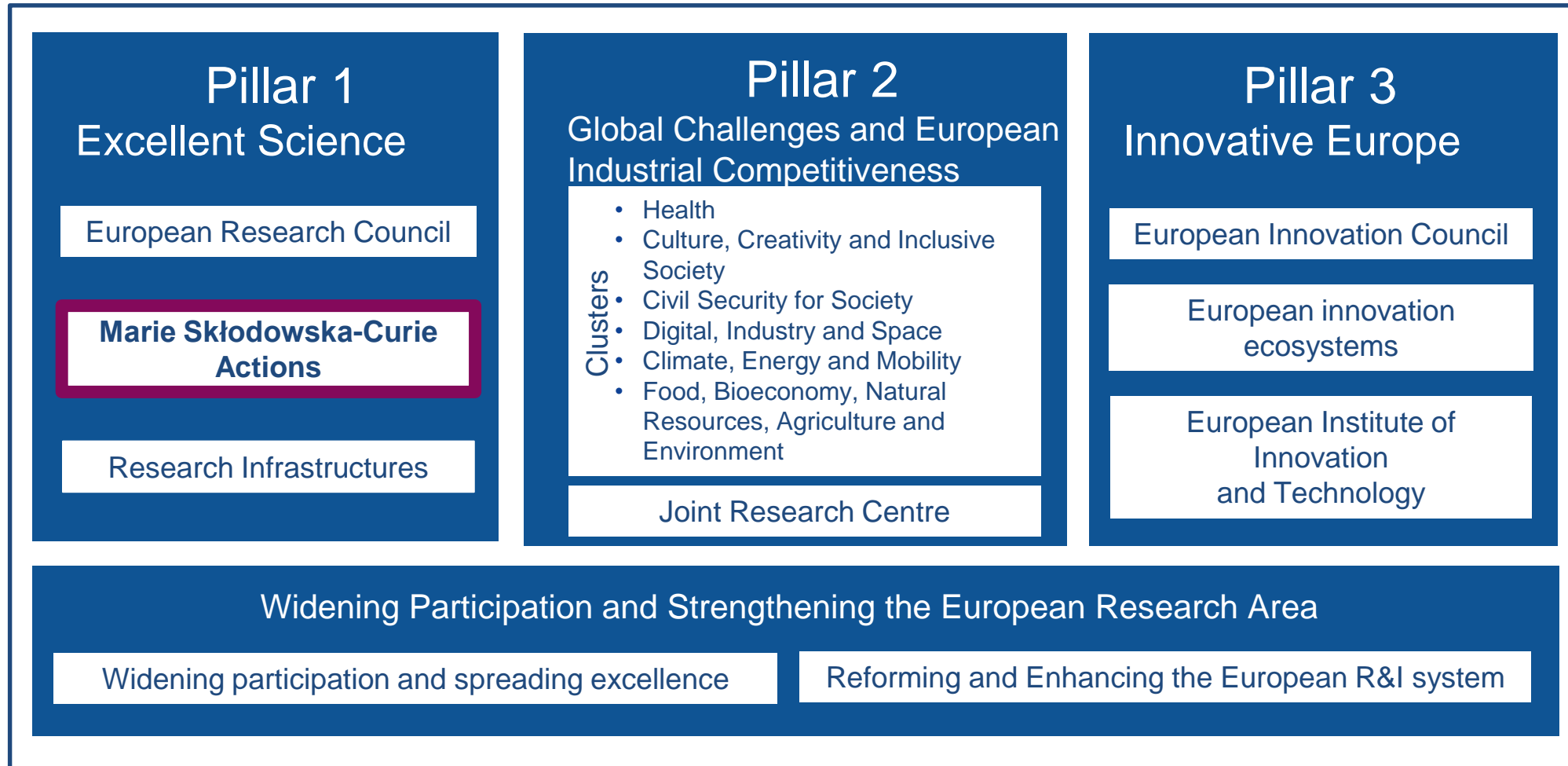
Marlène BARTES

Policy Officer

Directorate-General for Education, Youth, Sport and Culture,  
DG EAC.C.2

# Horizon Europe 2021-2027

95.5 billion €



MSCA budget under Horizon Europe: **6.6 billion €**

# MSCA key features



**Researchers' training, skills and career development (all stages of career)**



**Excellent research in all domains (bottom-up approach)**



**International, cross-sectoral & interdisciplinary mobility**



**Attractive working and employment conditions**



**Structuring impact on organisations through excellent programmes**



**Strong collaboration with industry and SMEs**

**EU's reference programme for doctoral and postdoctoral training**

# The Actions

## The MSCA have **5** main actions

### Doctoral Networks

**implement doctoral programmes** (including joint doctorates and industrial doctorates) **by international partnerships** of organisations from different sectors. They train highly-skilled doctoral candidates, stimulate their creativity, enhance their innovation capacities and boost their employability in the long-term.

### Postdoctoral Fellowships

**support researchers' careers and foster excellence in research and innovation.** Researchers holding a PhD can carry out their research activities, acquire new skills and develop their careers abroad, whilst developing competences in non-academic sectors and working within interdisciplinary teams.

### Staff Exchanges

**encourage short-term international and inter-sectoral exchanges of research and innovation staff** through sustainable, collaborative projects in Europe and beyond. By doing so, they enhance knowledge and skills transfer and increase organisations' research and innovation capacities.

### MSCA and Citizens

**brings research and researchers closer to children, families and the public at large** through the European Researchers' Night - the annual research communication and promotion event taking place at the end of September across EU Member States and Horizon Europe Associated Countries.

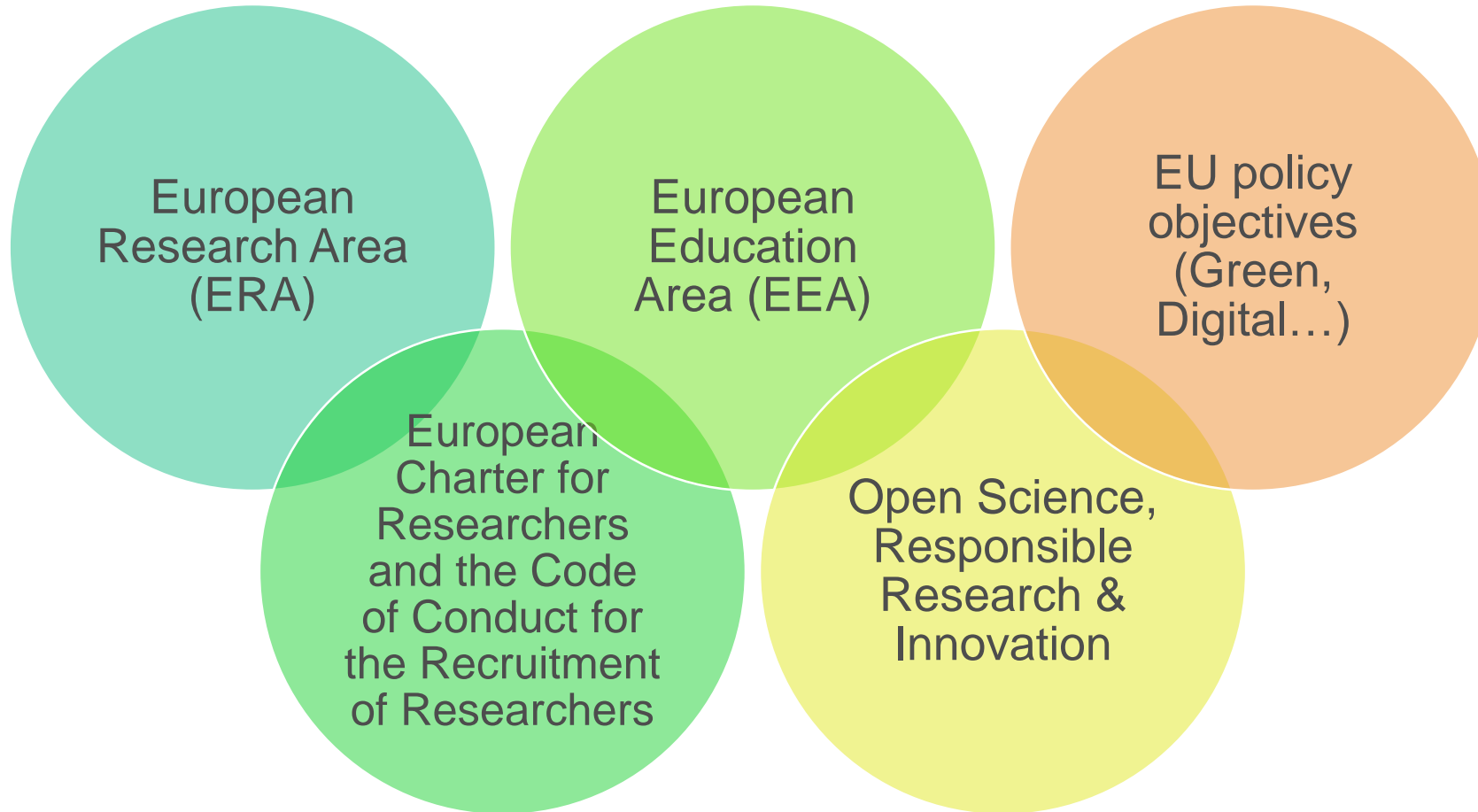
### COFUND

**co-finances regional, national and international doctoral and postdoctoral programmes for researchers' training and career development.** The COFUND action spreads MSCA's best practices by setting high standards and excellent working conditions, and boosts training and international, interdisciplinary and inter-sectoral mobility.

# Call Calendar 2021-2022

Action	Opening	Deadline	Budget (EUR million)
Doctoral Networks	3 May 2022	15 November 2022	427.28
Postdoctoral Fellowships	13 April 2022	14 September 2022	257
Staff Exchanges	7 October 2021	9 March 2022	72.5
COFUND	12 October 2021	10 February 2022	89

# Contribution to policy priorities



New **publishing platform** and open peer review:  
<https://open-research-europe.ec.europa.eu/>



# MSCA novelties under HE



- **Streamlined actions**, clearer identity
- **Simpler rules**, harmonised conditions
- **Reinforced synergies** within Horizon Europe and with other EU funding programmes (e.g. [Erasmus+](#))
- **Feedback to Policy (F2P)**, e.g. through “Cluster events”
- **New guidelines** (Supervision / Green Charter)
- **More gender-friendly and inclusive MSCA**



# Questions and answers

[www.sli.do](http://www.sli.do) #SE21





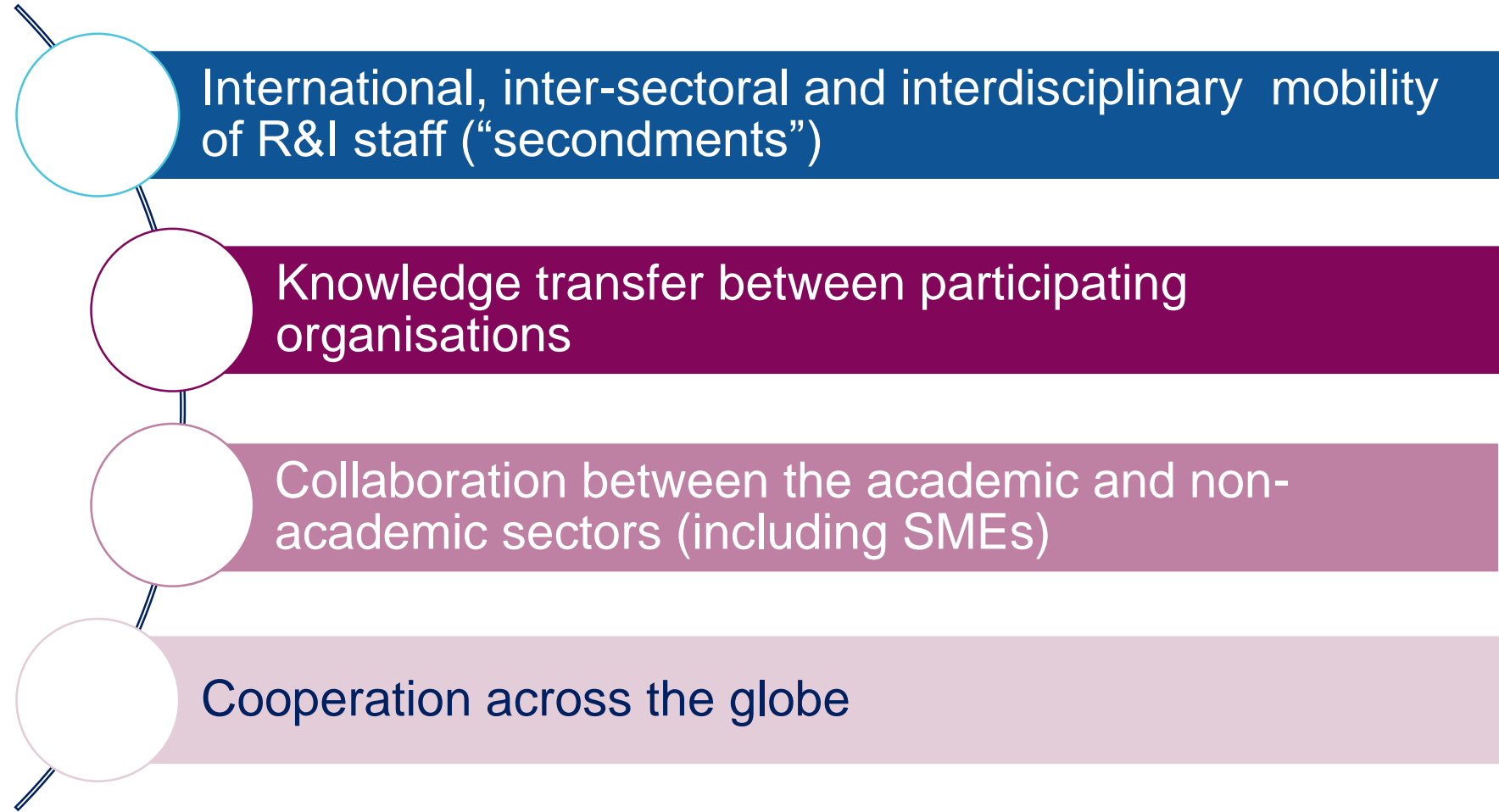
# Staff Exchanges Apply for funding

Nancy DZOKOTO POMENYA

Vasiliki EXARCHOU

Project Officers European Research Executive Agency  
REA.A.3

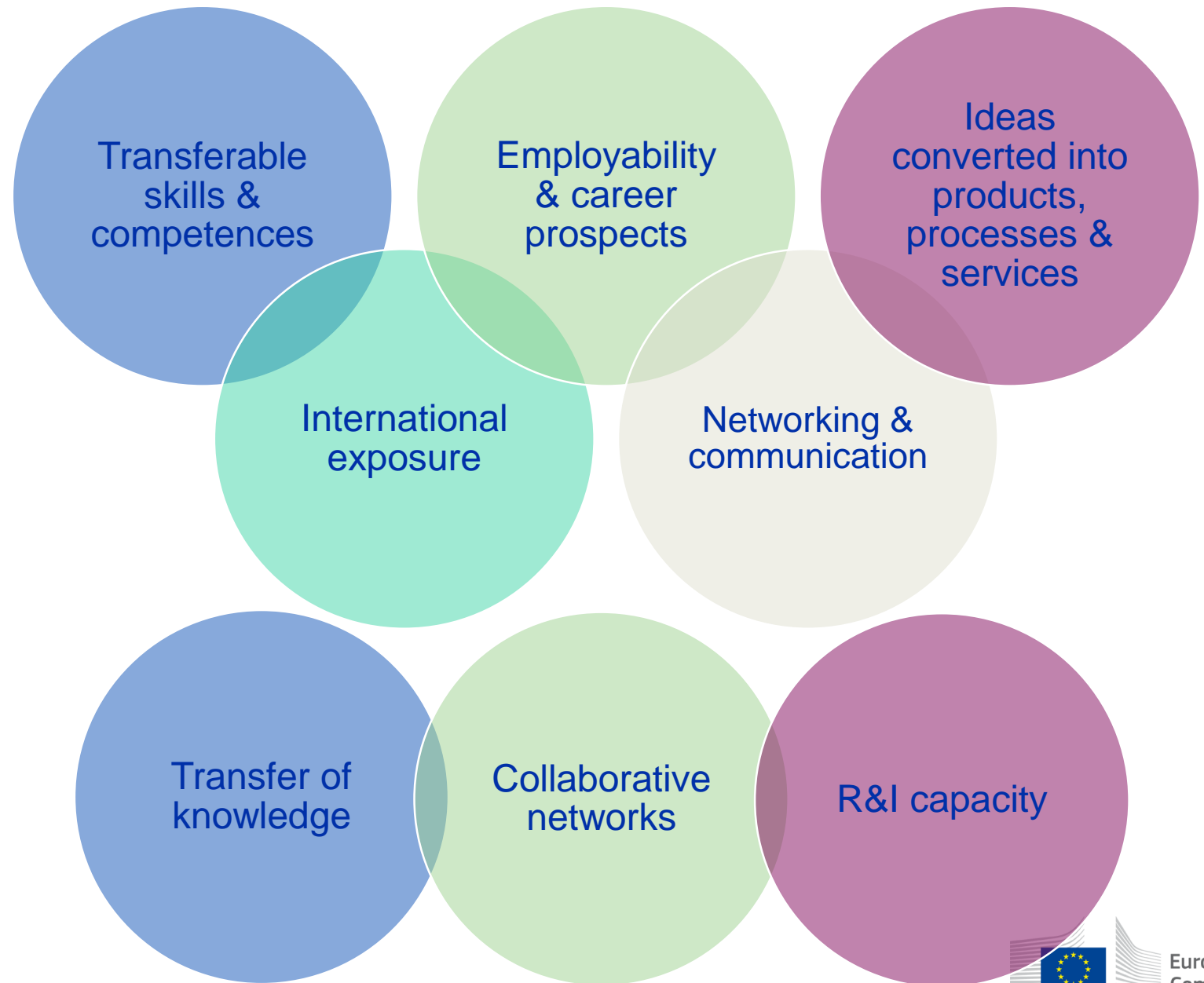
# Objectives



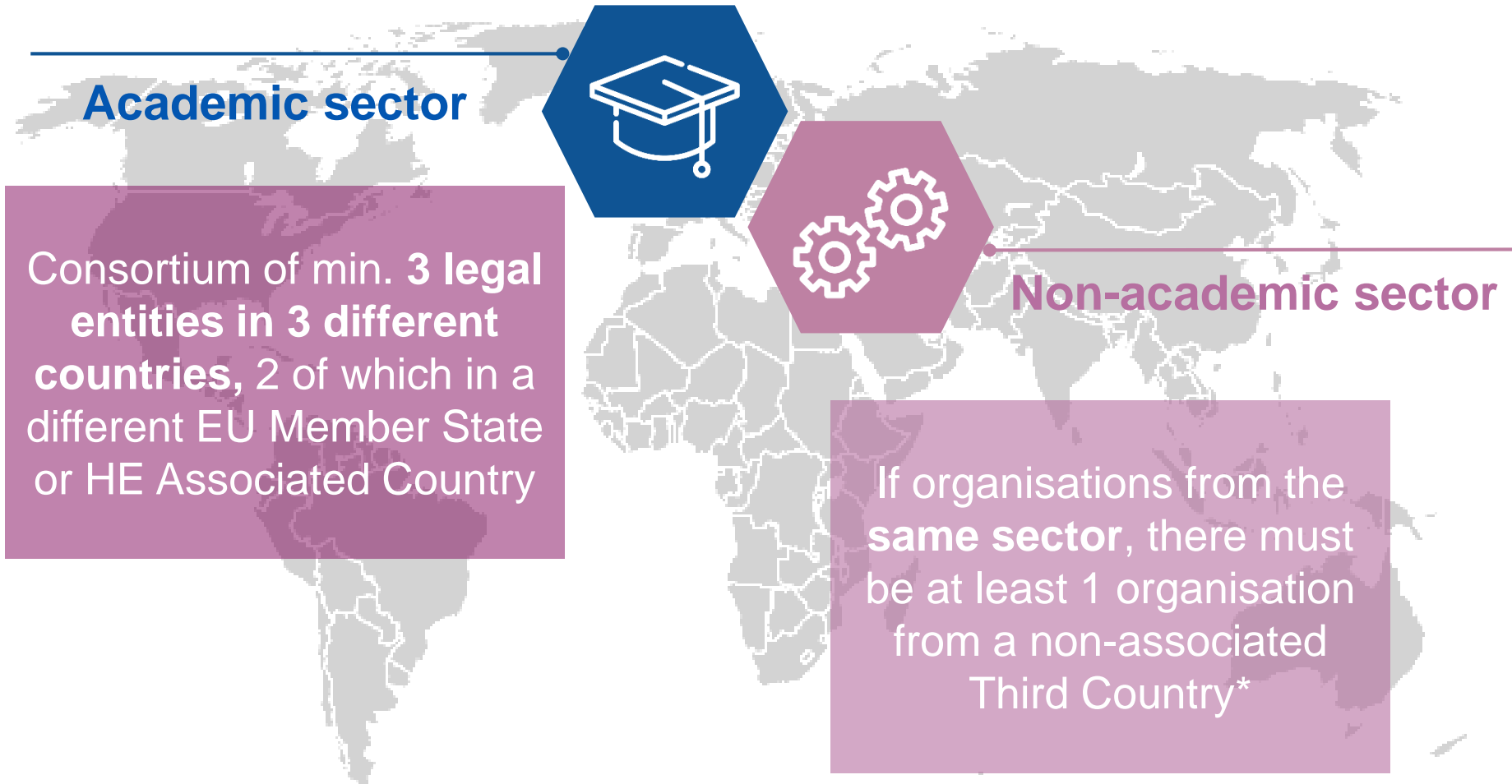
# Added value

## Staff members

## Organisations



# Eligible participants



\* Secondments within EU MS or HE AC must be between different sectors (between academic and non-academic), except for interdisciplinary secondments, which must be limited to a maximum of 1/3 of the total implemented months.

# Eligible staff



Any type of staff involved in R&I activities (researchers, administrative staff, managerial staff, technical staff)

Each staff member is seconded for a period of **1 to 12 months** (may be split into several stays)

## Seconded staff members

Researchers at any career stage (from doctoral candidates to postdoctoral researchers)

Staff needs to be devoted **full-time** to the action during the secondment



Actively engaged in research and/or innovation activities for at least **1 month** prior at the sending institution

After the secondment, staff should **return to their sending institution**

# Eligible exchanges

		"HOSTING" (receiving seconded staff members)		
		Academic organisation in MS/AC (1)	Non-academic organisation in MS/AC (2)	Organisation in TC*
"SENDING" (seconding staff members from organisation)	Academic organisation in MS/AC (1)	1/3	✓	✓
	Non-academic organisation in MS/AC (2)	✓	1/3	✓
	Organisation in TC*	✓	✓	✗

**1/3** This symbol refers to same sector secondments up to 1/3 of the total implemented secondments funded by the EU as long as they are demonstrated to be interdisciplinary.

\* denotes TC partners that are eligible for automatic funding



# Same-sector secondments in Europe (MS/AC)

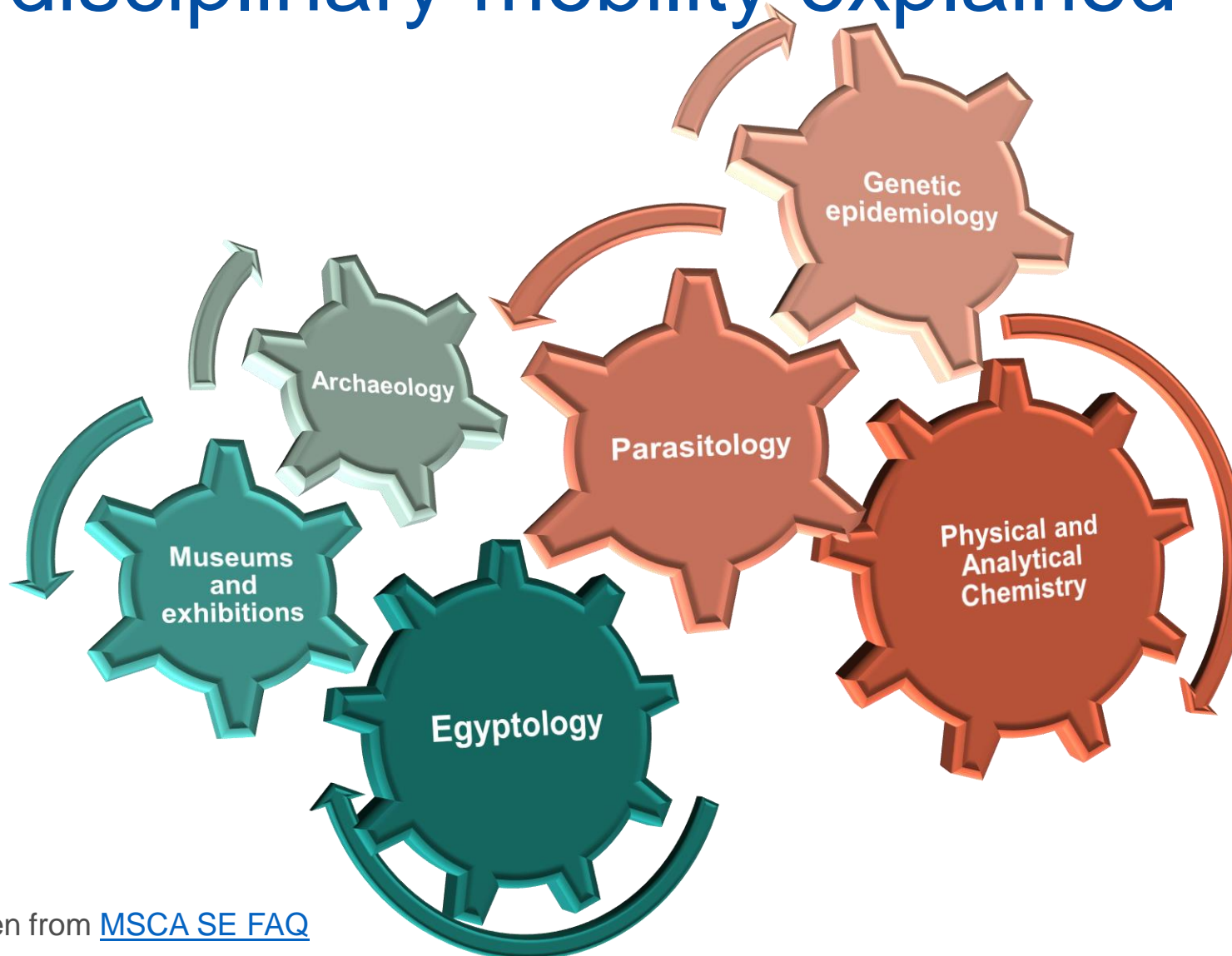


≤ 1/3 of the total secondments funded by the EU, if considered **Interdisciplinary**

Interdisciplinary secondments integrate aspects from **two or more different scientific disciplines**.

Important: **scientific panels + descriptors/first level MSCA keywords** from proposal form part A (see [REA Website](#))

# Interdisciplinary mobility explained

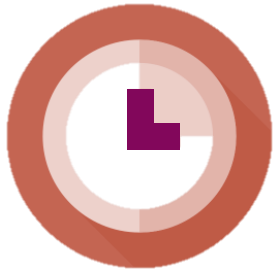


Examples taken from [MSCA SE FAQ](#)

# What does Staff Exchanges fund?



# Key features – summary



## DURATION

4 years  
360 PM per project



## SECONDMENTS

1-12 months per staff  
*Interdisciplinary*  
secondments: same  
sector, within Europe  
for max 1/3 PM



## UNIT COST

4600€  
2300€ - Staff  
allowance  
2300€ -  
organisation



## BUDGET

EU funding  
average  
75,5 Mio€/call



# Focus on the proposal

# Proposal Submission



Funding & tender opportunities  
Single Electronic Data Interchange Area (SEDIA)



SEARCH FUNDING & TENDERS ▼

HOW TO PARTICIPATE ▼

PROJECTS & RESULTS

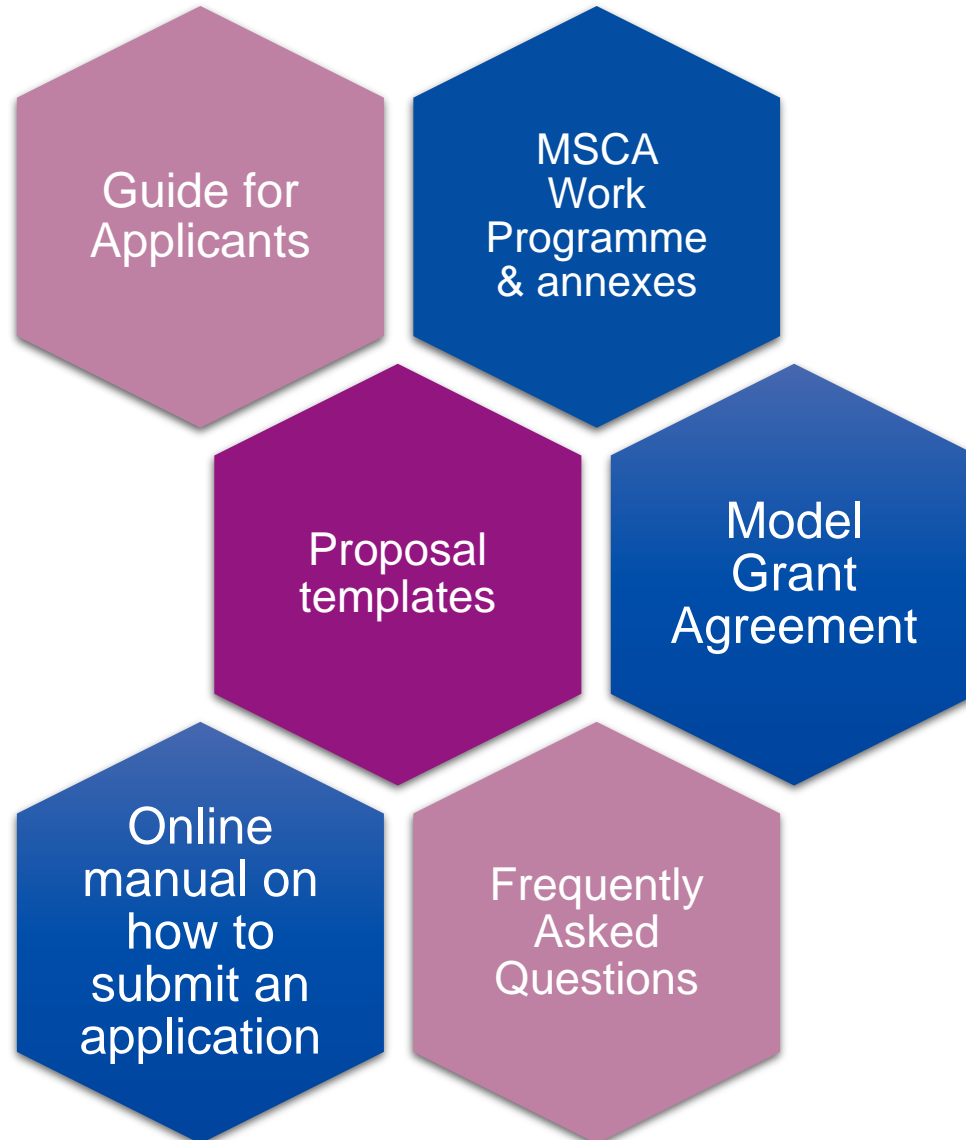
WORK AS AN EXPERT

SUPPORT ▼

All calls are published on the **Funding and Tender Opportunities Portal:**

- Find your call
- Sign in to the portal and register your organisation (get a PIC number)
- Find partners
- Apply! <https://ec.europa.eu/info/funding-tenders/opportunities/portal/>

# Reference Documents



# Proposal documents



Funding & tender opportunities  
Single Electronic Data Interchange Area (SEDIA)



SEARCH FUNDING & TENDERS ▼

HOW TO PARTICIPATE ▼

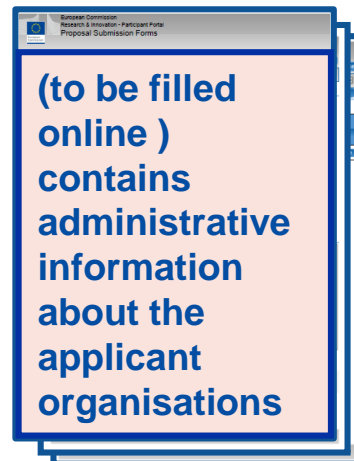
PROJECTS & RESULTS

WORK AS AN EXPERT

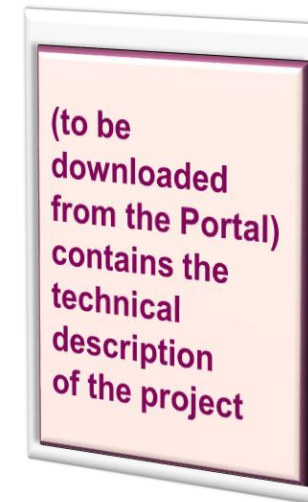
SUPPORT ▼

## Apply here!

**Part A**  
**(structured data)**



**Part B**  
**(description of action)**





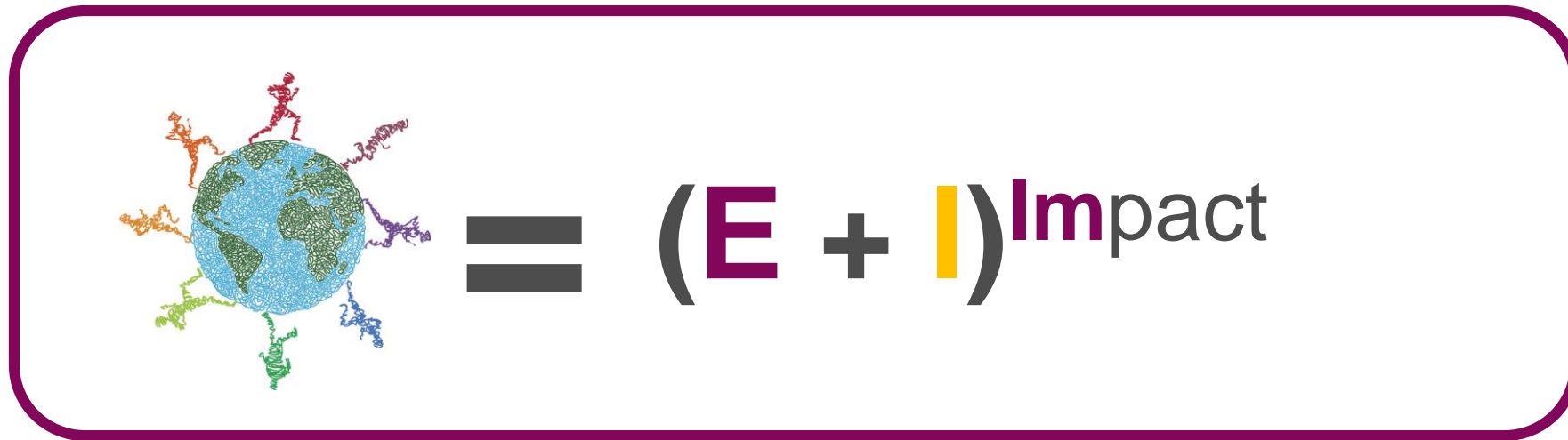
# Evaluation criteria

Excellence	Impact	Quality and efficiency of the implementation
Quality and pertinence of the project's <b>research and innovation objectives</b> (and the extent to which they are ambitious, and go beyond the state of the art)	Developing new and lasting <b>research collaborations</b> , achieving <b>transfer of knowledge</b> between participating organisations and contributing to improving <b>research and innovation potential</b> at the European and global level	Quality and effectiveness of the <b>work plan</b> , assessment of <b>risks</b> , and appropriateness of the effort assigned to work packages
Soundness of the <b>proposed methodology</b> (including <b>i3</b> approaches, consideration of the gender dimension and other diversity aspects, and the quality of open science practices)	Credibility of the measures to enhance the <b>career perspectives</b> of staff members and contribution to their <b>skills development</b>	Quality, capacity and role of each participant, including <b>hosting arrangements</b> and extent to which the consortium as a whole brings together the necessary expertise
Quality of the proposed <b>interaction between the participating organisations</b> in light of the research and innovation objectives	Suitability and quality of the measures to <b>maximise expected outcomes and impacts</b> , as set out in the dissemination and exploitation plan, including communication activities  The magnitude and importance of the project's contribution to the expected <b>scientific, societal and economic impacts</b>	
<b>50%</b>	<b>30%</b>	<b>20%</b>



# Evaluation

## Formula for Staff Exchanges success stories



**E**xcellence and **I**mplementation are closely interlinked!



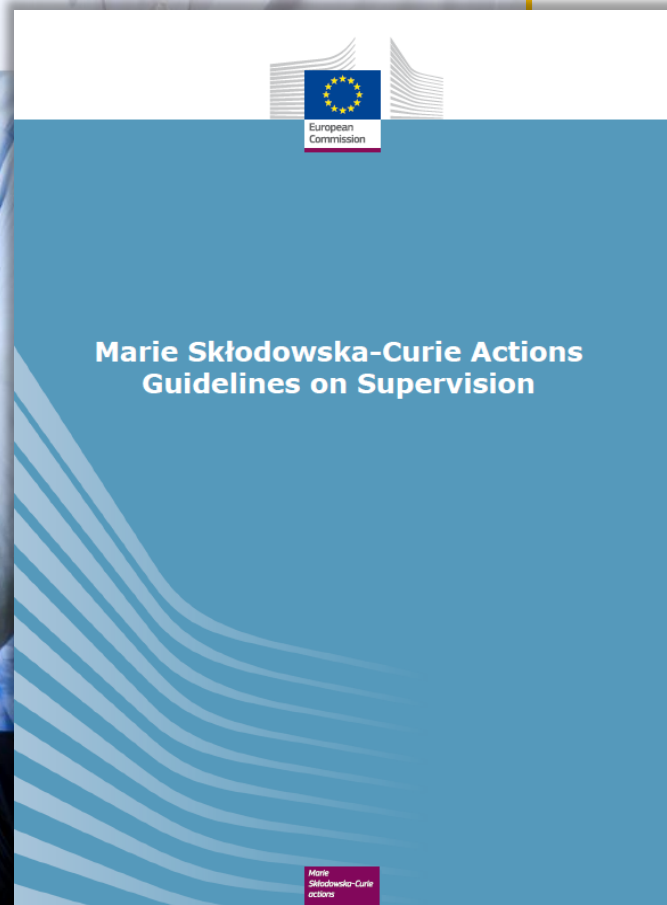
# Recommended Guidelines in the HE Work programme

Horizon Europe Work Programme :

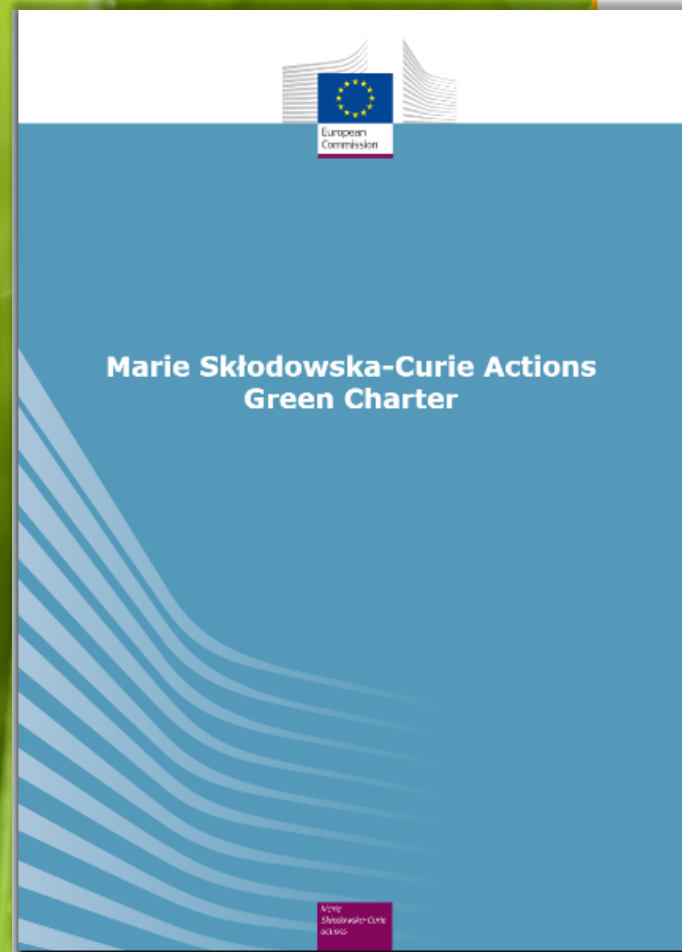
*“All MSCA-funded projects are encouraged to follow the recommendations outlined in the **Guidelines for MSCA supervision**”.*

A set of recommendations to be adopted on a best effort basis by participants in the programme – both individuals and institutions – e.g. from research support and career development to well-being, conflict resolution and training for supervisors.

<https://ec.europa.eu/research/mariecurieactions/about-msca/msca-guidelines-supervision>



# Recommended Guidelines in the HE Work programme



Horizon Europe Work Programme :  
*“All MSCA-funded projects are encouraged to address the principles of the **MSCA Green Charter** and implement measures to minimize the environmental footprint of their activities”.*

<https://ec.europa.eu/research/mariecurieactions/green-charter>

# Tips and tricks

## **Closely follow the call requirements**

Be in line with the action's objectives and expected outcomes

## **Follow available guidelines**

Use the structure provided in the template and address all the evaluation criteria

## **Highlight the EU dimension**

Show that your proposal addresses EU policy priorities and/or societal challenges

## **Get a second opinion**

Have your proposal proof-read by a colleague and pre-screened by your NCP

## **Sustainability of collaboration**

Describe the benefits of cooperation and how they can go beyond this project

**Contact your  
National Contact Point  
(NCP)**

# Next MSCA SE calls

Call	2021		Call	2022	
	Opening Closing	Budget (M€)		Opening Closing	Budget (M€)
Staff Exchanges	07/10/2021 09/03/2022	72,5	Staff Exchanges	06/10/2022 08/03/2023	77,5



# Questions and answers

[www.sli.do](http://www.sli.do) #SE21





# Business & academia: success stories





Maria Fatima LUCAS  
CEO - ZYMOVOL



Anne-Laure MENTION  
Director - Global Business  
Innovation Enabling  
Capability Platform at Royal  
Melbourne Institute of  
Technology



Alessio DI IORIO  
CEO - Alma Sistemi SRL

Slido: #SE21

# Bacterial Enzymes and Bioprocesses for Lignin Valorization



**B-LigZymes** aims to solve key fundamental and technological challenges for **lignin biodegradation and valorization**

<https://www.itqb.unl.pt/b-ligzymes>



Identify and isolate **new** bacterial ligninolytic enzymes



Improve the performance and robustness of enzymes, relying on iterative experimental and computational protein **engineering** tools



Advance the **understanding** of ligninolytic enzymes at a molecular level, which will guide further optimization of biocatalytic systems



Set-up **enzymatic processes** for lignin depolymerization fractionation that lead to the production of chemicals and polymers from renewable resources



This project has received funding from the European Union's Horizon 2020 research and innovation programme under the Marie Skłodowska - Curie grant agreement No 824017

ZYMOVOL

# Consortium



## Coordinator



UNIVERSIDADE NOVA  
DE LISBOA

## Academic Partners



university of  
 groningen



Università  
Ca' Foscari  
Venezia



TOR VERGATA  
UNIVERSITÀ DEGLI STUDI DI ROMA

NC STATE  
UNIVERSITY



INTEQUI



Technische  
Universität  
Braunschweig

INQUIMAE



CONICET

FCEN - UBA

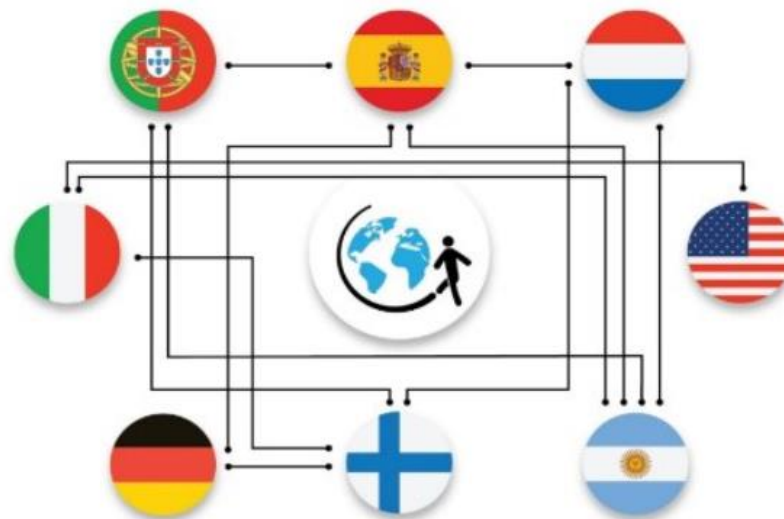


UNIVERSITÀ  
DI PAVIA



INTEQUI

## Industrial Partners



# A global touch to Research Translation



A global network of researchers and industry practitioners across Europe and Australia for promoting the translation of research between university-industry through cooperation and

Open Innovation in the sectors of:



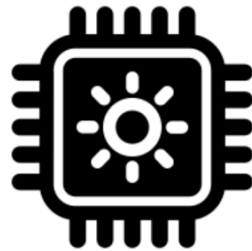
## FinTech

A new financial industry that applies technology to improve or innovate financial services



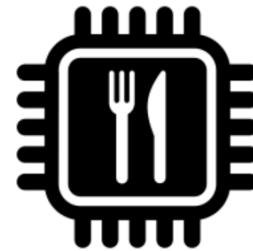
## Industry 4.0

Digitalisation of fully integrated, automated, optimised manufacturing flows



## CleanTech

A range of low carbon technologies aimed at providing solutions to environmental problems



## FoodTech

Application of advanced tech to production, packaging & distribution of food

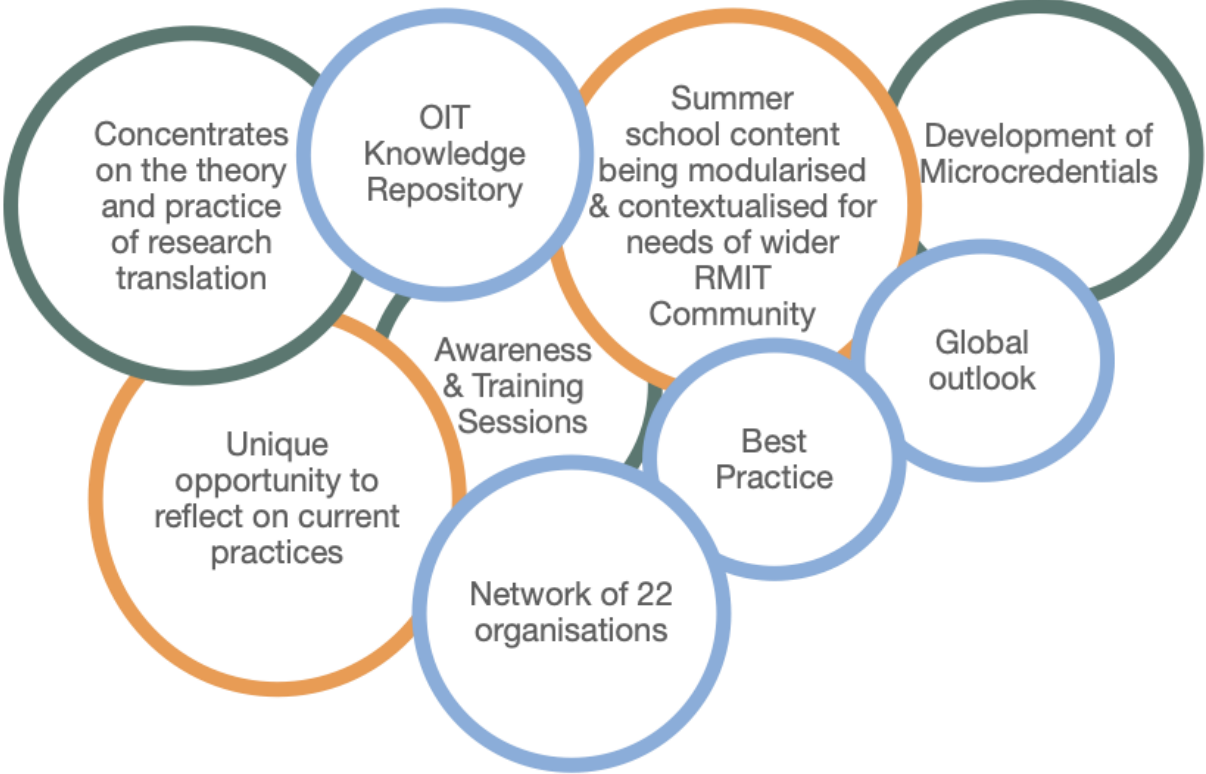
<b>2.4MEUR</b>	<b>1</b>	<b>9</b>
H2020 EU Project	Book	Sessions @ Conferences
<b>540 PM</b>	<b>1</b>	<b>9</b>
Intra EU + Australian secondments	Masterclass	Workshops
	<b>1</b>	<b>21</b>
	Summer School	Public Events
<b>1</b>	<b>9</b>	<b>21</b>
Hackathon	Journal Articles	Internal Meetings

# Partners across Europe & Australia:



**22**  
Partners

**15**  
Researchers seconded to RMIT via OIT



More information ? Reach out

Prof. Anne-Laure Mention

RMIT University

[Anne-laure.mention@rmit.edu.au](mailto:Anne-laure.mention@rmit.edu.au)

Pauline Rasera

OpenInnoTrain Project Manager

RMIT Europe

[Pauline.rasera@rmit.edu.au](mailto:Pauline.rasera@rmit.edu.au)



This project has received funding from  
the European Union's Horizon 2020  
research and innovation programme  
under the Marie Skłodowska-Curie grant  
agreement No 823971

- ▶ Italian SME providing high level engineering and consultancy services in the space and defence market
- ▶ Established in 2005
- ▶ 16 employees  
(+ 2 permanent consultants)
- ▶ 1,2 M€ turnover in 2019
- ▶ Certified ISO 9001: 2015
- ▶ RTD Projects & industrial contracts (MGSE)

Customer	Completed Projects	Ongoing projects
EC Framework Program 7 and Horizon 2020	5	6*
Mechanical Engineering – European Space Agency	7	1
RTD - Italian Space Agency	3	1
RTD - National Programs	2**	2**

\* Of which 5 as coordinator / \*\* Both as coordinator

# Ongoing Research & Technology Development Projects

## H2020-MSCA-RISE-2016: PATH - Plasma Advanced Technologies



## H2020-MSCA-RISE-2018: IN TIME – Planetary Instrument and Mars Geoscience





# Ongoing Research & Technology Development Projects

**H2020-MSCA-RISE-2018: STABLE** – Assess and monitor Structural stability of Cultural Heritage building resilience to earthquakes using remote sensing and engineering modelling



SAPIENZA  
UNIVERSITÀ DI ROMA



National  
Technical  
University of  
Athens



FREDERICK  
UNIVERSITY



UNIVERSITÀ  
DEGLI STUDI DELLA  
TUSCIA



**H2020-MSCA-RISE-2018: RESEARCH** – Monitoring of Cultural Heritage assets by remote sensing techniques



UNIVERSITÀ  
DEGLI STUDI DELLA  
TUSCIA



UNIWERSYTET  
IM. ADAMA MICKIEWICZA  
W POZNANIU



Alma Sistemi s.r.l.  
consulting for space



# New RTD projects

## H2020-MSCA-RISE-2020: eUMaP - Development of Utilities Management Platform for the case of Quarantine and Lockdown



Alma Sistemi SRL



Kaunas University of technology



Cleopa GmbH



Frederick University



NITEL



Space Systems Solutions



Aristotle University of Thessaloniki



Geosystems Hellas S.A



UAB Caverion Lietuva



## H2020-MSCA-RISE-2020: EYE – Economy bY space



# Questions and Answers: Slido code #SE21



Maria Fatima LUCAS  
CEO - ZYMOVOL



Anne-Laure MENTION  
Director - Global Business  
Innovation Enabling  
Capability Platform at Royal  
Melbourne Institute of  
Technology



Alessio DI IORIO  
CEO - Alma Sistemi SRL



# Slido feedback poll

[www.sli.do](https://www.sli.do) #SE21



# Thank you



© European Union 2020

Unless otherwise noted the reuse of this presentation is authorised under the [CC BY 4.0](https://creativecommons.org/licenses/by/4.0/) license. For any use or reproduction of elements that are not owned by the EU, permission may need to be sought directly from the respective right holders.

Slide 4, 8,15,17,18,20,22,25,30,31: elements concerned, source: flaticon

